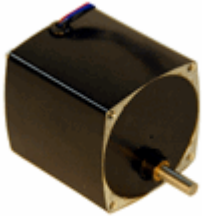


STEPPING MOTOR FAMILY

Series 60mm (TS) Geared Stepping Motor



Step Angle:	7.5° & 15°
Torque Range:	Up to 250 oz-in [1765 mN-m]
Position Accuracy:	+/- 5% max.
Number of Phases:	4 phase bifilar
Insulation Class:	Class A (105°C)
Lead Wire:	6 leads 24AWG (approx. 12 inches [304.8 mm])
Operation Ambient Temp:	-10°C to +40°C (approx.)
Shaft Bearing:	Sleeve Bearing
Gear Unit:	Zinc Die cast - AGMA 7 Standards with hardened steel gears
Note: Typical data subject to change without notification	

Dependable TS series motors are used in many heavy-duty applications.

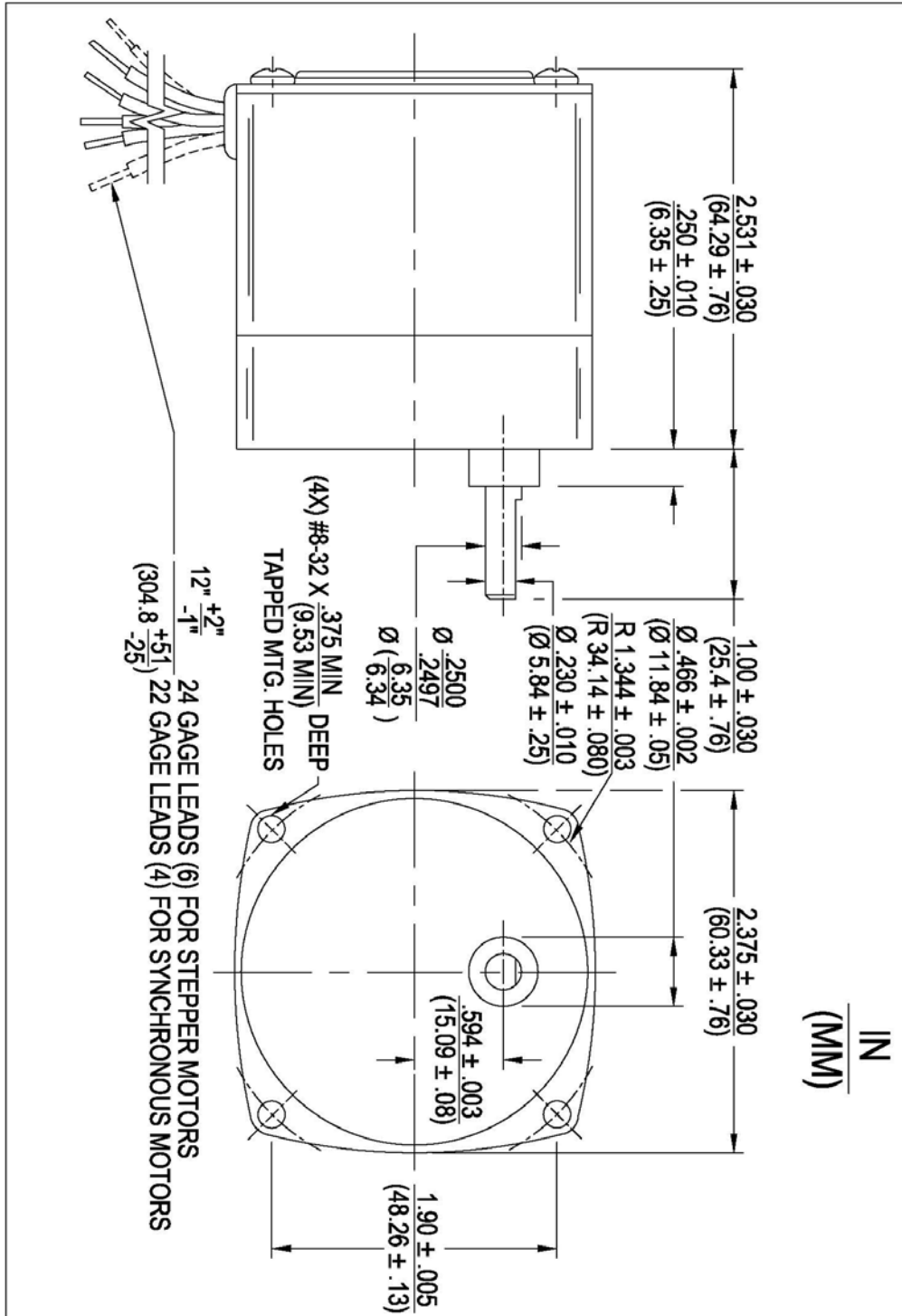
All gears are hobbed to AGMA 7 quality. Pinions are extruded from a special steel with a modified long addendum tooth form to provide higher strength. Pinions are held to the same AGMA 7 quality level as the gears. Both pinion and gear teeth are case hardened for wear resistance and rotate upon hardened and ground steel studs. Torque ratings up to 250 oz.-in [1765.4 mN-m].

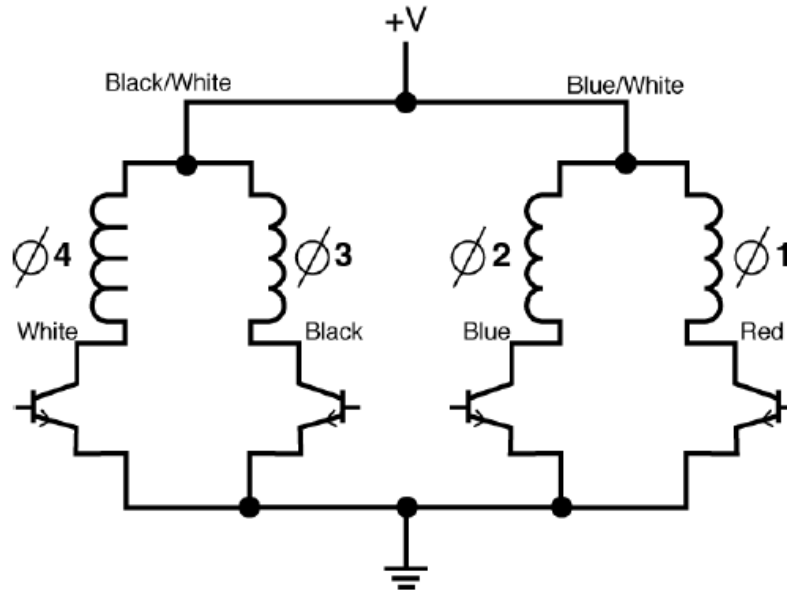
Notes:

- Sleeve bearings are standard.

Model	Part Number	Reduction	Step Angle (degrees)	Steps per Revolution	Rated Torque @ 200 p/s (oz-in)	Rated Torque @ 200 p/s (mN-m)	Output Speed (RPM)	Input Power (watts)	Nominal Voltage (VDC)	Winding Resistance (ohms)	Weight (oz)	Weight (g)
TS	2606-001	300	0.025	14400	250	1765.4	0.83	8.5	12	31	27	765.4
TS	2606-010	300	0.025	14400	250	1765.4	0.83	8.5	6	9.8	27	765.4
TS	2606-044	300	0.025	14400	250	1765.4	0.83	8.5	24	135	27	765.4
TS	2606-002	150	0.05	7200	240	1694.8	1.67	8.5	12	31	27	765.4
TS	2606-042	100	0.075	4800	233	1645.3	2.5	8.5	12	31	27	765.4
TS	2606-003	75	0.1	3600	218	1539.4	3.3	8.5	12	31	27	765.4
TS	2606-012	75	0.1	3600	175.5	1239.3	3.3	8.5	6	9.8	27	765.4
TS	2606-004	30	0.25	1440	96.6	682.1	8.3	8.5	12	31	27	765.4
TS	2606-013	30	0.1	3600	75.6	533.9	8.3	8.5	6	9.8	27	765.4
TS	2606-033	30	0.25	1440	75.5	533.1	8.3	8.5	24	135	27	765.4
TS	2608-001	30	0.25	1440	78	550.8	8.3	8.5	12	30	27	765.4
TS	2606-005	20	0.375	960	64.4	454.8	12.5	8.5	12	31	27	765.4

Model	Part Number	Reduction	Step Angle (degrees)	Steps per Revolution	Rated Torque @ 200 p/s (oz-in)	Rated Torque @ 200 p/s (mN-m)	Output Speed (RPM)	Input Power (watts)	Nominal Voltage (VDC)	Winding Resistance (ohms)	Weight (oz)	Weight (g)
TS	2606-006	12.5	0.6	600	40.25	284.2	20	8.5	12	31	27	765.4
TS	2606-007	10	0.75	480	34.5	243.6	25	8.5	12	31	27	765.4
TS	2606-008	4.17	1.8	200	14.4	101.7	60	8.5	12	31	27	765.4
TS	2606-045	4.17	1.8	200	14.4	101.7	60	8.5	24	135	27	765.4
TS	2606-009	2	3.75	96	6.9	48.7	125	8.5	12	31	27	765.4





	Ø4 White	Ø3 Black	Ø2 Blue	Ø1 Red	
CCW ROTATION ↑	1	0	1	0	↓ CW ROTATION
	1	0	0	1	
	0	1	0	1	
	0	1	1	0	

1 = ON, 0 = OFF
SWITCHING SEQUENCE

**MODELS TS 2605-001 AND TS 2610-002
UNIPOLAR L/R DRIVE**

