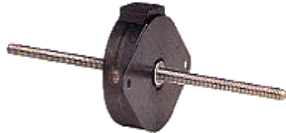


# VARIABLE SPEED LINEAR ACTUATOR MOTOR FAMILY

## Series SLS, SBLS Stepping Linear Actuator



Maximum Load:	SLS 15 lbs., SBLS 10 lbs.
Rotor Assembly:	Threaded to accept a std. 1/4"-20 5/6 ACME 2G right-hand screw (Class 2G RH)
Insulation Class:	Class A (105°C)
Lead Wire:	4 leads 24 AWG (approx. 9 inches [228.6 mm])
Operation Ambient Temp:	-10°C to +40°C (approx.)
Temperature Rise:	70°C max
Rotor Bearings:	Ball Bearings Standard
Shaft Length:	8 inches [203.2 mm] max with travel 6.75 inches [171.45 mm]
Note: Typical data subject to change without notification	

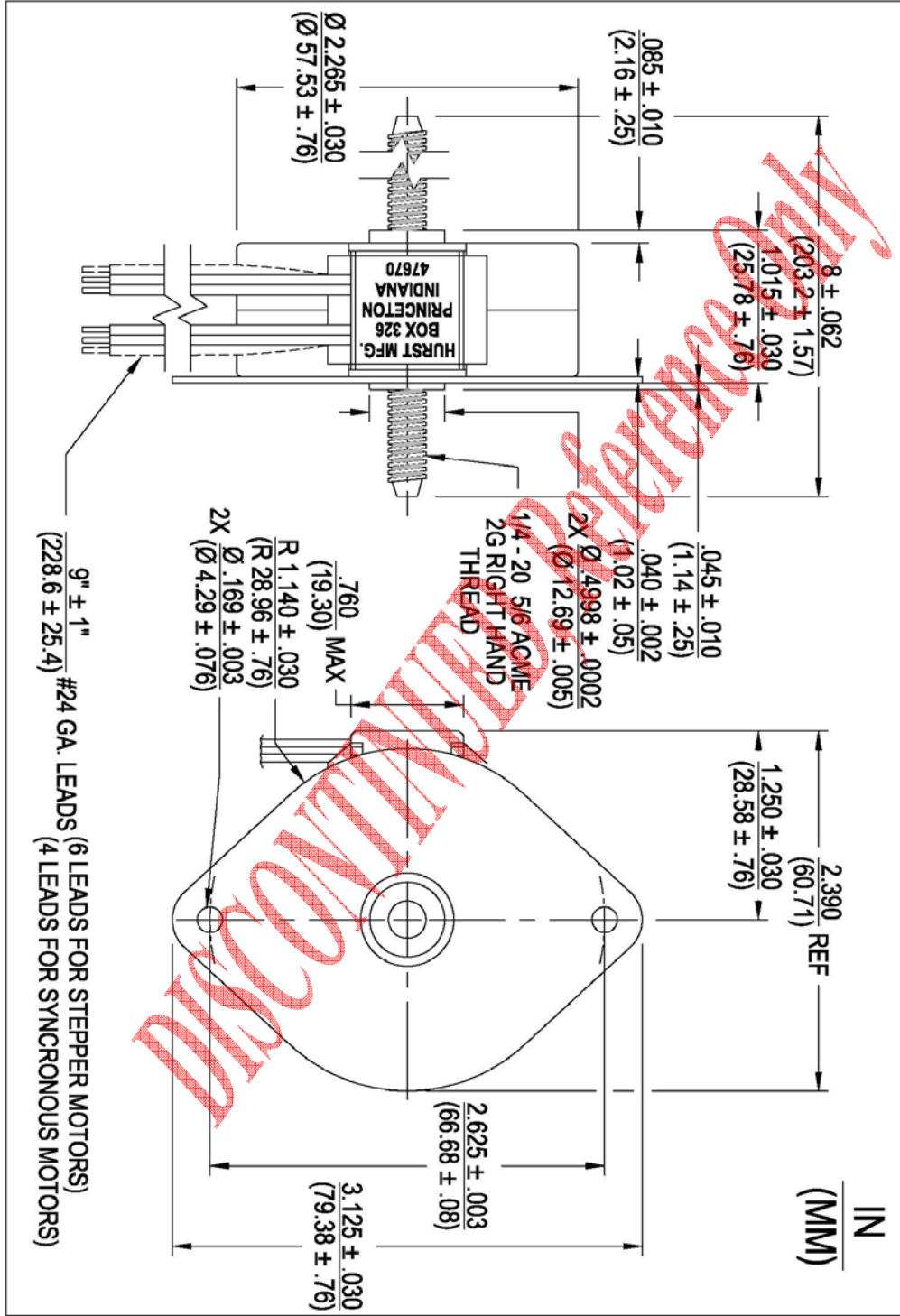
SLS and SBLS stepping linear actuators are reversible, permanent magnet types. The nut accepts a 1/4 in. diameter, 0.048 pitch Acme screw that provides linear motion for pushing, pulling, lifting, and positioning applications.

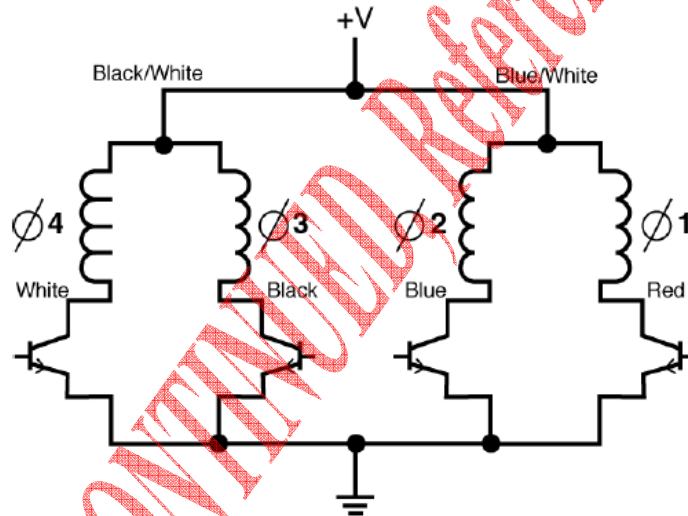
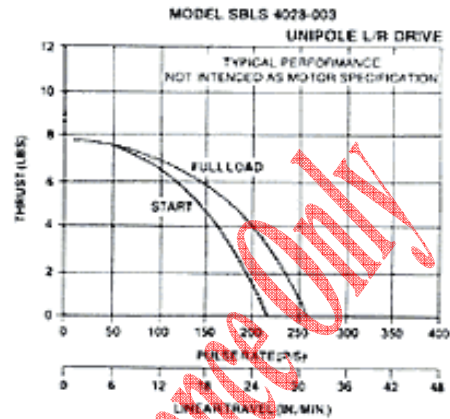
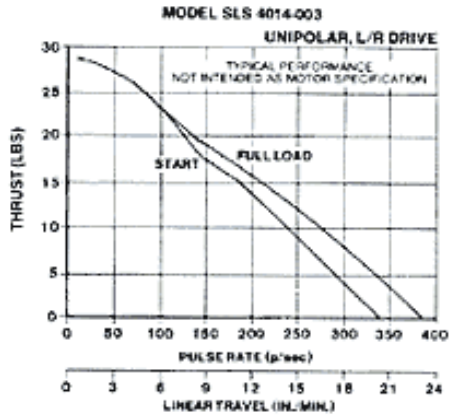
Standard 8 in. [203.2 mm] lead screws have maximum travel of 6.75 in. [171.45 mm] and a maximum thrust of 15 pounds. Screws of other lengths may be specified. Ball bearings are standard. The motors provide travel of 0.24 or 0.48 inch [0.61 or 1.22 cm] per second.

**Notes:**

- Standard SLS and SBLS motors have 4-phase, unipolar windings for 6, 12, or 24 VDC.
- Bi-polar windings may be specified.

Model	Part Number	Nominal Voltage (Vdc)	Rotor Speed (RPM)	Steps per Inch	in/sec	cm/sec	Maximum Load (lbs)	Maximum Load (kg)	Shaft Length (in)	Shaft Length (cm)	Input Power (watts)	Winding Res. (ohms)	Weight (oz)	Weight (g)
SLS	4014-001	6	300	1000	.2	.51	15	6.8	8	20.32	11.5	6.3	10.5	297.68
SLS	4014-002	12	300	1000	.2	.51	15	6.8	8	20.32	11.5	25	10.5	297.68
SLS	4014-003	24	300	1000	.2	.51	15	6.8	8	20.32	11.5	100	10.5	297.6





Ø4	Ø3	Ø2	Ø1
White	Black	Blue	Red

CCW ROTATION ↑	1	0	1	0	↓ CW ROTATION
	1	0	0	1	
	0	1	0	1	
	0	1	1	0	

**1 = ON, 0 = OFF**

**SWITCHING SEQUENCE**