

## STEPPING MOTOR FAMILY

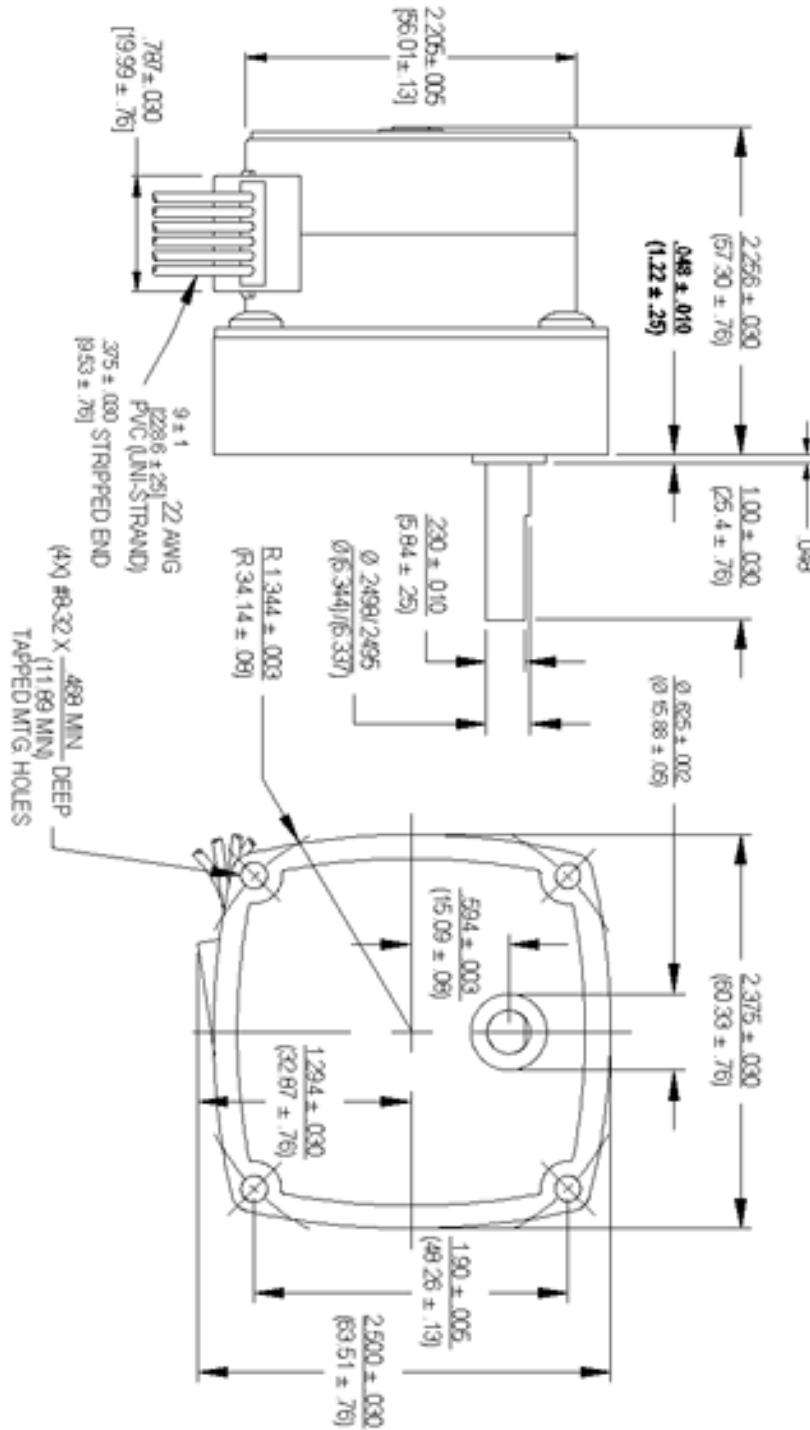
### Series LSG55 Geared Stepping Motor



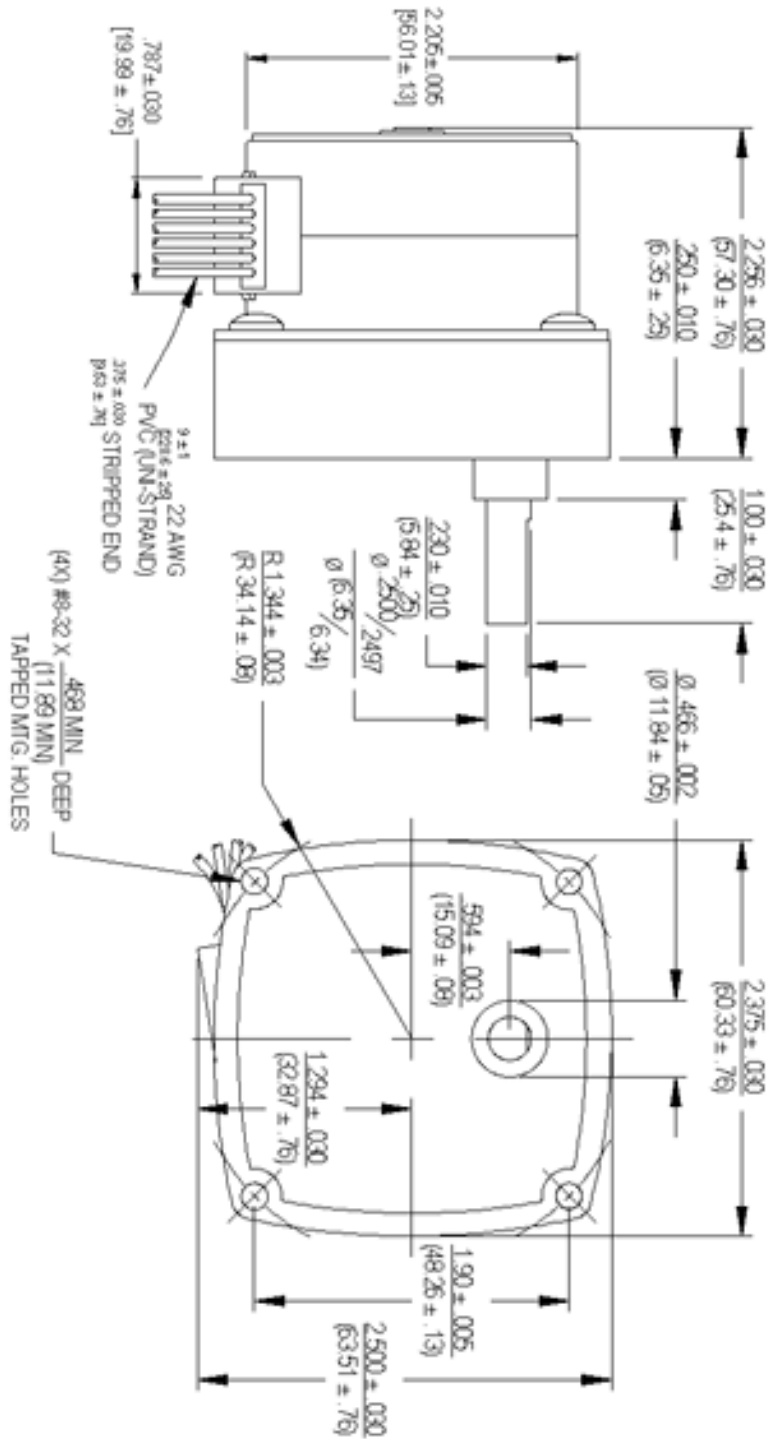
Frame Size:	55mm
Step Angle:	7.5°
Position Accuracy:	+/- 5% max.
Number of Phases:	4 phase bifilar
Insulation Class:	Class A (105°C)
Lead Wire:	6 leads 24AWG (approx. 9 inches [228.6 mm])
Shaft Bearings:	Sleeve/Ball (see Drawings Below)
Operation Ambient Temp:	-10°C to +40°C (approx.)
Temperature Rise:	60°C max
Note: Typical data subject to change without notification	

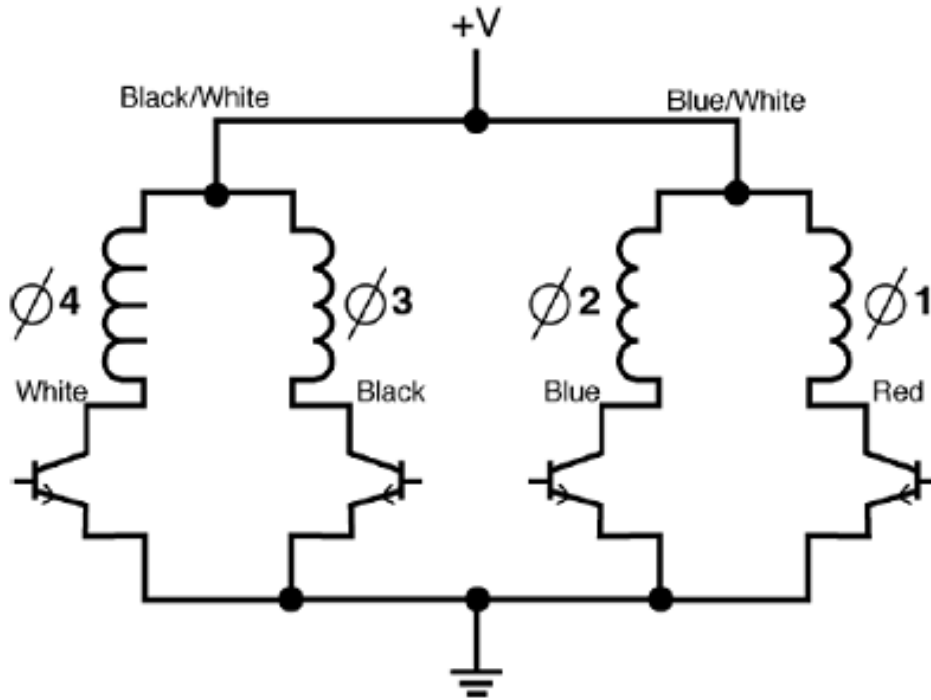
Part Number	"SAS" P/N REF.	Step Angle (deg)	Reduction	Voltage (Vdc)	Torque @ 175 p/s (oz-in)	Torque @ 175 p/s (mN-m)	Output Speed @ 175 p/s	Resistance (ohms)	Inductance (mH/phase) @ 1KHz	Input Power (W)
LSG55T006F46S	4004-028	0.375	20	6	67	473.1	10.9	8	9.5	9
LSG55T006F52S	4004-026	0.25	30	6	101	713.2	7.3	8	9.5	9
LSG55T006F98S	4004-021	0.025	300	6	200	1412.3	0.73	8	9.5	9
LSG55T012E04S	4004-019	3.75	2	12	7.2	50.8	109.4	32	33	9
LSG55T012E30S	4004-014	0.75	10	12	36	254.2	21.9	32	33	9
LSG55T012F40S	4004-012	0.5	15	12	54	381.3	14.6	32	33	9
LSG55T012F52S	4004-010	0.25	30	12	101	713.2	7.3	32	33	9
LSG55T012F58S	4004-009	0.2	37.5	12	126	889.8	5.8	32	33	9
LSG55T012E76S	4004-006	0.1	75	12	162	1144	2.9	32	33	9
LSG55T012E90S	4004-004	0.05	150	12	185	1306.4	1.5	32	33	9
LSG55T012F98S	4004-002	0.025	300	12	200	1412.3	0.73	32	33	9
LSG55T012F97S	4004-001	0.0125	600	12	200	1412.3	0.36	32	33	9
LSG55T024E30S	4004-025	0.75	10	24	36	254.2	21.9	128	145	9
LSG55T024E76S	4004-027	0.1	75	24	162	1144	2.9	128	145	9

BALL BEARING:



SLEEVE BEARING:





	Ø4 White	Ø3 Black	Ø2 Blue	Ø1 Red	
CCW ROTATION ↑	1	0	1	0	↓ CW ROTATION
	1	0	0	1	
	0	1	0	1	
	0	1	1	0	

**1 = ON, 0 = OFF**

**SWITCHING SEQUENCE**