

STEPPING MOTOR FAMILY

Series 42mm (LSD42) Direct Drive Stepping Motor

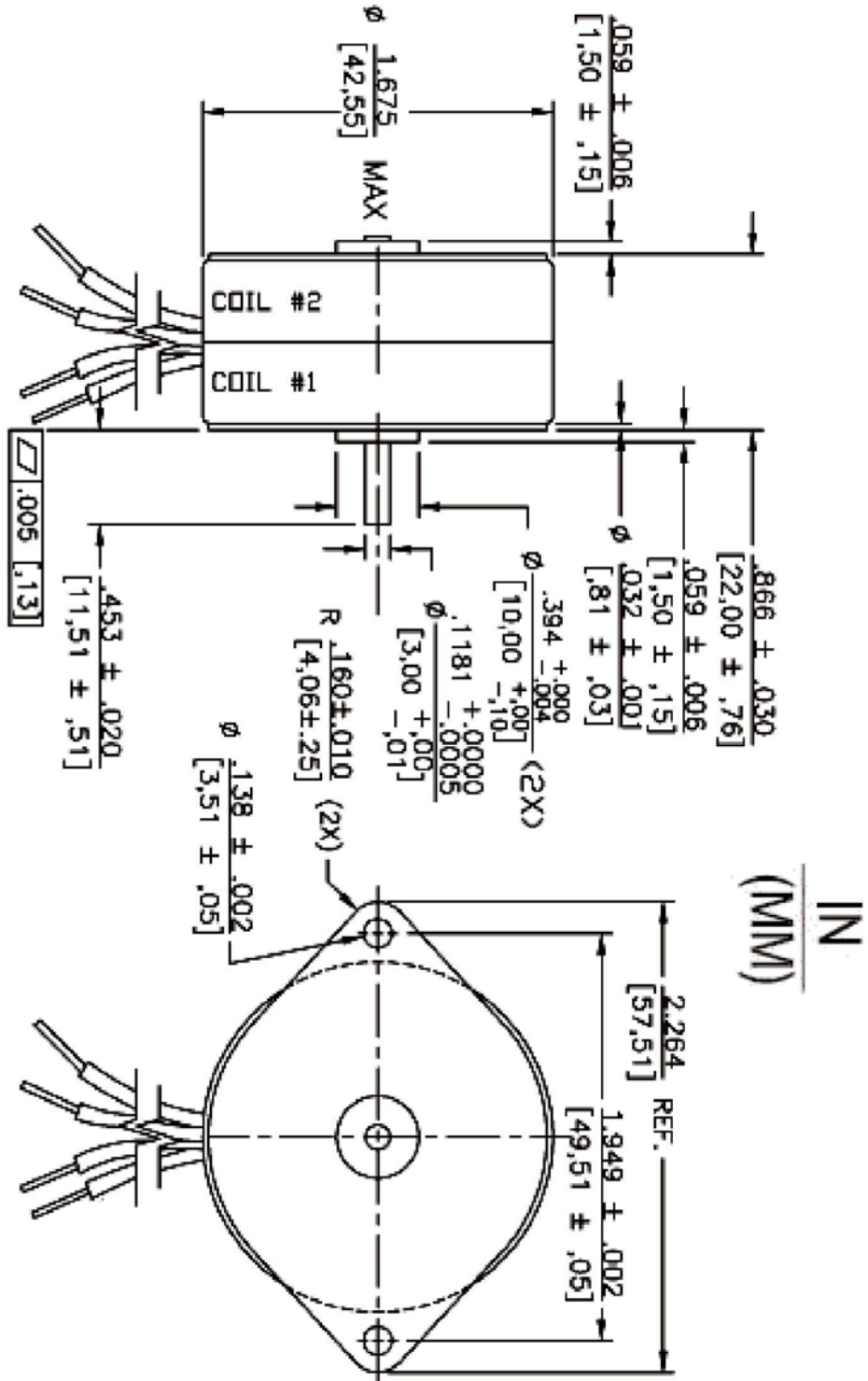


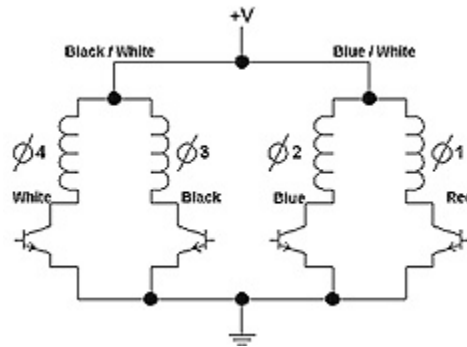
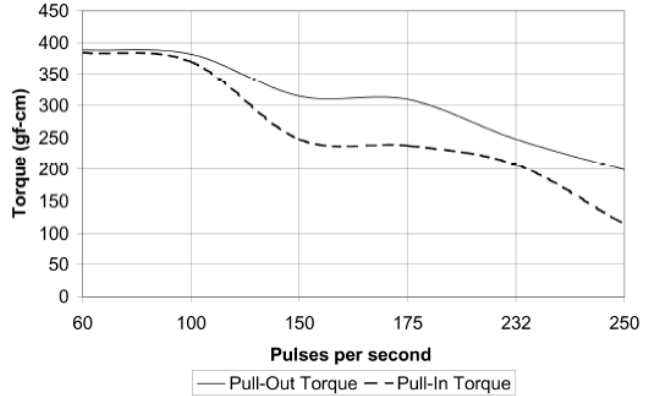
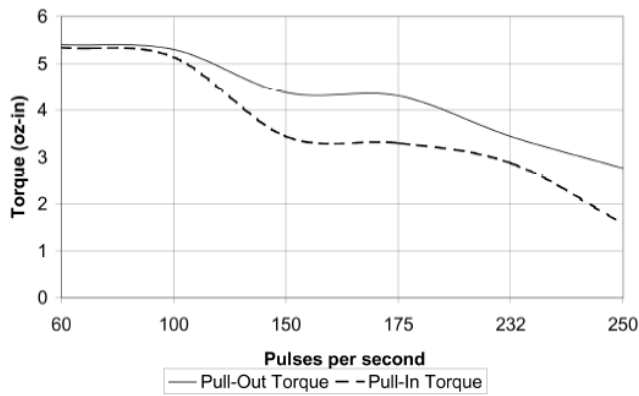
Frame Size:	42mm
Step Angle:	7.5°
Steps per Revolution:	48
Detent Torque:	1.8 oz-in [12.7 mN-m]
Position Accuracy:	+/- 5% max.
Number of Phases:	4 phase bifilar
Insulation Class:	Class A (105°C)
Insulation Resistance:	100 MΩ at 500Vdc
Dielectric Strength:	600 Vac/second
Lead Wire:	6 leads 28AWG (approx. 9 inches [228.6 mm])
Operation Ambient Temp:	-10°C to +40°C (approx.)
Temperature Rise:	60°C max
Note: Typical data subject to change without notification	

Example: LS G 35 12 E02 P

	Motor Family	Gearing	Motor Size	Voltage	Gear Ratio	Gear Box
Options	LS	D=Direct Drive G=G geared	35=35MM 42=42MM	005=5VDC 006=6VDC 012=12VDC 024=24VDC	Gear Options	P=Pear-Shaped Gearbox R=Round Gearbox

Model	Part Number	Step Angle (deg.)	Steps per Rev.	Rated Torque @ 175 p/s (oz-in)	Rated Torque @ 175 p/s (mN-m)	Holding Torque (oz-in)	Holding Torque (mN-m)	Detent Torque (oz-in)	Detent Torque (mN-m)	Output Speed (RPM)	Input Power (watts)	Nominal Voltage (VDC)	Winding Res. (ohms)	Rated Ind. (mH)	Rotor Inertia (oz-in ²)	Rotor Inertia (g-cm ²)	Case Length (in)	Case Length (mm)	Weight (oz)	Weight (g)
LSD42	LSD42005D	7.5	48	3.6	25.4	8	56.5	1.8	12.7	300	5.5	5	9	5.8	0.0394	7.2	0.866	22	4.8	136.1
LSD42	LSD42006D	7.5	48	3.6	25.4	8	56.5	1.8	12.7	300	6	6	12	9.5	0.0394	7.2	0.866	22	4.8	136.1
LSD42	LSD42012D	7.5	48	3.6	25.4	8	56.5	1.8	12.7	300	5.8	12	50	33	0.0394	7.2	0.866	22	4.8	136.1
LSD42	LSD42024D	7.5	48	3.6	25.4	8	56.5	1.8	12.7	300	6.1	24	190	215	0.0394	7.2	0.866	22	4.8	136.1





	Ø4 White	Ø3 Black	Ø2 Blue	Ø1 Red	
CCW ROTATION ↑	1	0	1	0	↓ CW ROTATION
	1	0	0	1	
	0	1	0	1	
	0	1	1	0	

1 = ON, 0 = OFF

SWITCHING SEQUENCE