

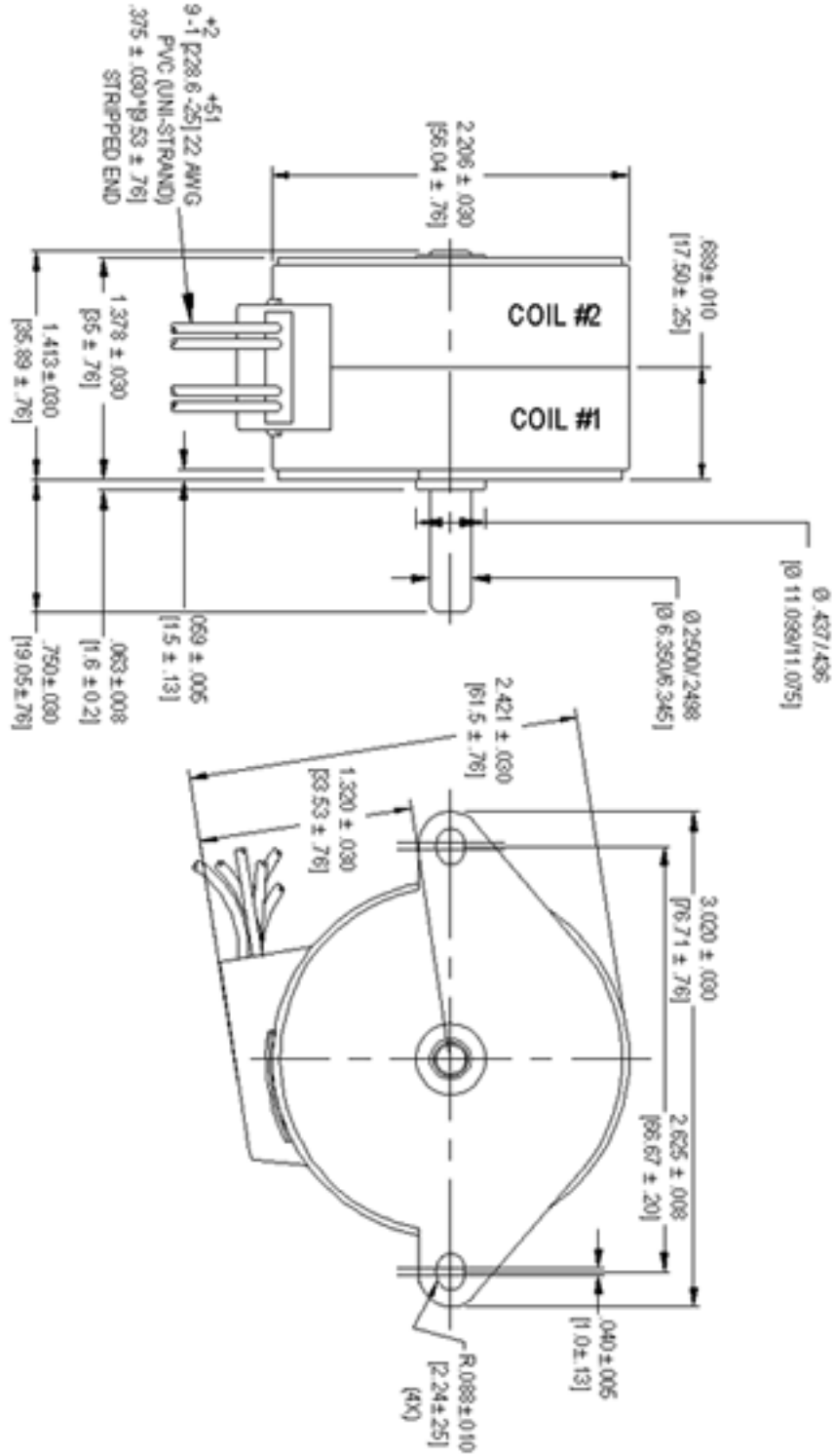
## STEPPER MOTOR FAMILY

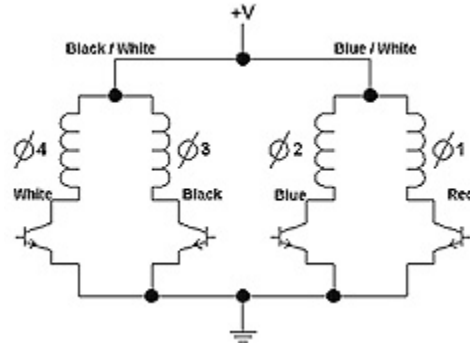
### Series 55mm (LSD55) Direct Drive Stepper Motor



Frame Size:	55mm
Step Angle:	7.5°
Standard Voltages:	5- 24 Vdc
Position Accuracy:	+/- 5% max.
Number of Phases:	4 phase bifilar
Insulation Class:	Class A (105°C)
Lead Wire:	6 leads 24AWG (approx. 9 inches [228.6 mm])
Operation Ambient Temp:	-10°C to +40°C (approx.)
Temperature Rise:	60°C max
Note: Typical data subject to change without notification	

Part Number	Voltage (Vdc)	Minimum Holding Torque (oz-in)	Minimum Holding Torque (mN-m)	Resistance (Ohms/Phase)	Inductance (mH/Phase) @ 1KHz	Hold Current (A)	INPUT WATTS (W)	Rotor Inertia (oz-in <sup>2</sup> )	Rotor Inertia (g-cm <sup>2</sup> )
LSD55T-005D	5	16.5	116.5	5.6	6.7	1.8	9	0.34	62
LSD55T-006D	6	16.5	116.5	8	9.5	1.5	9	0.34	62
LSD55T-012D	12	16.5	116.5	32	33	0.708	9	0.34	62
LSD55T-024D	24	16.5	116.5	128	145	0.375	9	0.34	62





	φ4 White	φ3 Black	φ2 Blue	φ1 Red	
CCW ROTATION ↑	1	0	1	0	↓ CW ROTATION
	1	0	0	1	
	0	1	0	1	
	0	1	1	0	

**1 = ON, 0 = OFF**

**SWITCHING SEQUENCE**